

**BE**

CONFIDENT  
COLLABORATIVE  
**YOURSELF**  
DETERMINED  
PURPOSEFUL



Patient  
portrayal

**GETTING STARTED:  
YOUR TREATMENT HANDBOOK**

Please see Important Safety Information  
on pages 4-7 and [tap here for the Patient  
Information in the full Prescribing Information.](#)

 **CABOMETYX**<sup>®</sup>  
(cabozantinib) tablets

## INFORMATION AND SUPPORT FOR YOU

About CABOMETYX® (cabozantinib).....	3
Important Safety Information.....	4-7
How CABOMETYX is thought to work.....	8-11
Advanced kidney cancer treatment	
CABOMETYX + OPDIVO® (nivolumab).....	12-13
CABOMETYX alone.....	14-15
CABOMETYX if you have been treated before.....	16-17
Liver cancer treatment.....	18-19
Taking your CABOMETYX.....	20-22
Managing and learning about certain side effects....	23-27
Partnering with your healthcare team.....	28-29
Taking an active role in your treatment.....	30-31
Support and resources.....	32-35

Visit **CABOMETYX.com** for more information, and to sign up for our BE CONNECTED support program.

The information in this handbook is not a substitute for advice from your healthcare team.

Please see Important Safety Information on pages 4-7 and [tap here for the Patient Information in the full Prescribing Information.](#)

## WHAT TO KNOW AS YOU START TAKING CABOMETYX

Your doctor has chosen CABOMETYX for you or someone you are caring for.

This handbook will help you as you start treatment.

It provides information about CABOMETYX, how to take it, and what to do if you have side effects.

### What is CABOMETYX?

CABOMETYX is a kind of medicine called a tyrosine kinase inhibitor (TKI). It is a tablet.

#### It is used to treat:

- People with advanced kidney cancer alone or in combination with a medicine called OPDIVO if you have not already had treatment
- People with liver cancer as a single medicine, who have been treated before with the medicine sorafenib



Kidney cancer is called *renal cell carcinoma*.



Liver cancer is called *hepatocellular carcinoma*.

## INDICATIONS AND IMPORTANT SAFETY INFORMATION

### What is CABOMETYX?

CABOMETYX is a prescription medicine used to treat:

- People with kidney cancer (renal cell carcinoma). CABOMETYX may be used:
  - Alone to treat people with renal cell carcinoma (RCC) that has spread (advanced RCC)
  - In combination with nivolumab when your cancer has spread (advanced RCC), and you have not already had treatment for your advanced RCC
- People with liver cancer (hepatocellular carcinoma) who have been previously treated with the medicine sorafenib.

It is not known if CABOMETYX is safe and effective in children.

### What are the possible side effects of CABOMETYX?

#### CABOMETYX may cause serious side effects, including:

**Bleeding (hemorrhage).** CABOMETYX can cause severe bleeding that may lead to death. Tell your healthcare provider right away if you get any signs of bleeding during treatment with CABOMETYX, including:

- Coughing up blood or blood clots
- Vomiting blood or if your vomit looks like coffee grounds
- Red or black (looks like tar) stools
- Menstrual bleeding that is heavier than normal
- Any unusual or heavy bleeding

#### **A tear in your stomach or intestinal wall (perforation) or an abnormal connection between 2 parts of your body (fistula).**

Tell your healthcare provider right away if you get tenderness or pain in your stomach area (abdomen) that is severe or that does not go away.

#### **Blood clots, stroke, heart attack, and chest pain.**

Get emergency help right away if you get:

- Swelling or pain in your arms or legs
- Shortness of breath
- Feel lightheaded or faint
- Sweating more than usual
- Numbness or weakness of your face, arm or leg, especially on one side of your body
- Sudden confusion, trouble speaking or understanding
- Sudden trouble seeing in one or both eyes
- Sudden trouble walking
- Dizziness, loss of balance or coordination
- A sudden severe headache

Please see Important Safety Information on pages 4-7 and [tap here for the Patient](#)

#### 4 [Information in the full Prescribing Information.](#)

**High blood pressure (hypertension).** Hypertension is common with CABOMETYX and sometimes can be severe. Your healthcare provider will check your blood pressure before starting CABOMETYX and regularly during treatment with CABOMETYX. If needed, your healthcare provider may prescribe medicine to treat your high blood pressure. Tell your healthcare provider if you develop severe headaches, nose bleeds, tiredness or confusion, vision changes, chest pain, trouble breathing, irregular heartbeat, or blood in your urine.

**Diarrhea.** Diarrhea is common with CABOMETYX and can be severe. If needed, your healthcare provider may prescribe medicine to treat your diarrhea. Tell your healthcare provider right away, if you have frequent loose, watery bowel movements.

**A skin problem called hand-foot skin reaction.** Hand-foot skin reactions are common and can be severe. Tell your healthcare provider right away if you have rashes, redness, pain, swelling, or blisters on the palms of your hands or soles of your feet.

**Liver problems.** Liver problems may happen during treatment with CABOMETYX. When CABOMETYX is taken in combination with nivolumab, severe changes in liver function tests may happen more often than if you take CABOMETYX alone. Your healthcare provider will do blood tests to check your liver function before and during treatment with CABOMETYX.

Tell your healthcare provider right away if you develop symptoms of liver problems including: yellowing of your skin or the whites of your eyes, severe nausea or vomiting, pain on the right side of your stomach area (abdomen), dark urine, bleeding or bruising more easily than normal.

**Adrenal gland problems.** Your healthcare provider will monitor you for this problem. Your healthcare provider may prescribe hormone replacement therapy or corticosteroid medicines if needed. Tell your healthcare provider right away if you develop any of the following signs or symptoms: extreme tiredness, dizziness or fainting, weakness, nausea, or vomiting.

#### **Protein in your urine and possible kidney problems.**

Symptoms may include swelling in your hands, arms, legs, or feet. Your healthcare provider will check you for this problem during treatment with CABOMETYX.

## INDICATIONS AND IMPORTANT SAFETY INFORMATION (CONT'D)

**Severe jaw bone problems (osteonecrosis).** Your healthcare provider should examine your mouth before you start and during treatment with CABOMETYX. Tell your dentist that you are taking CABOMETYX. It is important for you to practice good mouth care during treatment with CABOMETYX. Tell your healthcare provider right away if you develop any symptoms of jaw problems, including: jaw pain, toothache, or sores on your gums.

**Wound healing problems.** Wound healing problems have happened in some people who take CABOMETYX. Tell your healthcare provider if you plan to have any surgery before or during treatment with CABOMETYX.

- You should stop taking CABOMETYX at least 3 weeks before planned surgery.
- Your healthcare provider should tell you when you may start taking CABOMETYX again after surgery.

### **Reversible Posterior Leukoencephalopathy Syndrome (RPLS).**

A condition called reversible posterior leukoencephalopathy syndrome can happen during treatment with CABOMETYX. Tell your healthcare provider right away if you have headaches, seizures, confusion, changes in vision, or problems thinking. Your healthcare provider may change your dose, temporarily stop, or permanently stop treatment with CABOMETYX if you have certain side effects.

The most common side effects of CABOMETYX include:

- Tiredness
- Decreased appetite
- Nausea
- Vomiting
- Weight loss
- Constipation
- Difficulty speaking

The most common side effects of CABOMETYX when used with nivolumab include:

- Tiredness
- Mouth sores
- Rash
- Low thyroid hormone levels (hypothyroidism)
- Pain in muscles, bones, and joints
- Decreased appetite
- Nausea
- Changes in the way things taste
- Stomach-area (abdominal) pain
- Cough
- Upper respiratory tract infection

Please see Important Safety Information on pages 4-7 and [tap here for the Patient Information in the full Prescribing Information.](#)

CABOMETYX may cause fertility problems in females and males, which may affect your ability to have children. Talk to your healthcare provider if you have concerns about fertility. These are not all of the possible side effects of CABOMETYX. Call your doctor for medical advice about side effects. You may report side effects to FDA at 1-800-FDA-1088 or [www.fda.gov/medwatch](http://www.fda.gov/medwatch).

If your healthcare provider prescribes CABOMETYX in combination with nivolumab, also read the Medication Guide that comes with nivolumab.

**Before you take CABOMETYX,** tell your healthcare provider about all of your medical conditions, including if you:

- Have had a liver problem other than liver cancer.
- Have a recent history of bleeding, including coughing up or vomiting blood, or black tarry stools.
- Have an open or healing wound.
- Have high blood pressure.
- Plan to have any surgery, dental procedure, or have had a recent surgery. You should stop treatment with CABOMETYX at least 3 weeks before planned surgery.
- Are pregnant, or plan to become pregnant. CABOMETYX can harm your unborn baby.
  - If you are able to become pregnant, your healthcare provider will check your pregnancy status before you start treatment with CABOMETYX.
  - Females who are able to become pregnant should use effective birth control (contraception) during treatment and for 4 months after your final dose of CABOMETYX.
  - Talk to your healthcare provider about birth control methods that may be right for you.
  - If you become pregnant or think you are pregnant, tell your healthcare provider right away.
- Are breastfeeding or plan to breastfeed. It is not known if CABOMETYX passes into your breast milk. Do not breastfeed during treatment and for 4 months after your final dose of CABOMETYX.

**Tell your healthcare provider about all the medicines you take,** including prescription or over-the-counter medicines, vitamins, and herbal supplements. CABOMETYX and certain other medicines may affect each other causing side effects.

### **What should I avoid while taking CABOMETYX?**

**Avoid** drinking grapefruit juice, eating grapefruit or taking supplements that contain grapefruit or St. John's wort during treatment with CABOMETYX.



## LEARN MORE ABOUT CABOMETRYX® (cabozantinib)

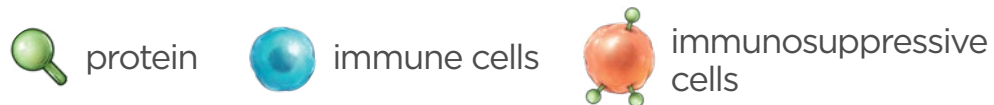
CABOMETRYX is a kind of medicine called a tyrosine kinase inhibitor (TKI). It can be taken alone for advanced kidney cancer or liver cancer for patients who have previously received the medicine sorafenib.

It may also be prescribed for some people with advanced kidney cancer in combination with an immunotherapy medicine called OPDIVO® (nivolumab) if you have not already had treatment for your advanced kidney cancer. The two treatments work differently.

### On the following pages, you can learn about:

- What happens inside your body when you have cancer
- How CABOMETRYX may work
- How CABOMETRYX may work with OPDIVO

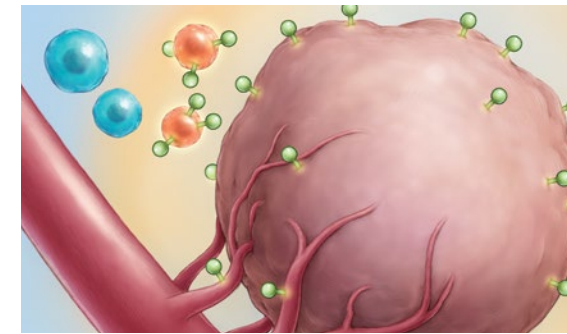
You will see these symbols in the images on the following pages. This guide shows what each one means.



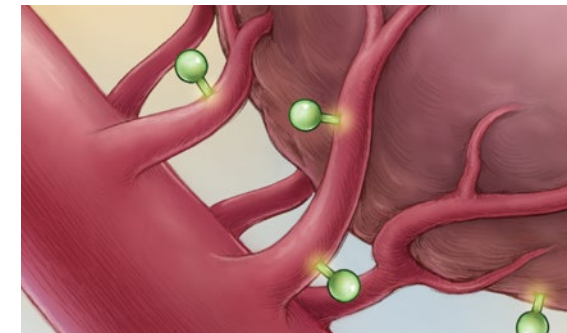
Please see Important Safety Information on pages 4-7 and [tap here for the Patient Information in the full Prescribing Information.](#)

## WHAT HAPPENS IN CANCER

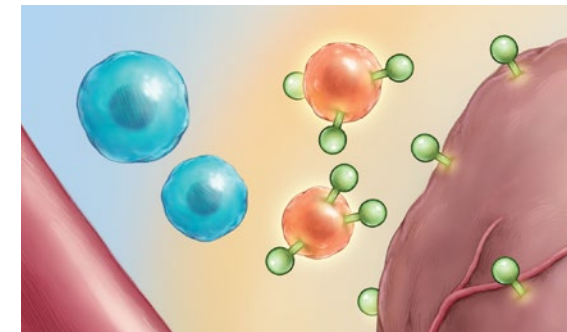
Your body's cells include proteins that send signals telling cells to grow and divide.



In cancer, these signals cause blood vessels to grow and feed the tumor (angiogenesis).

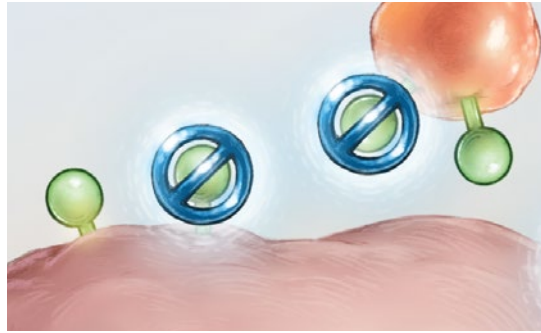


The immune cells that usually help find and kill cancer cells are stopped by immunosuppressive cells.

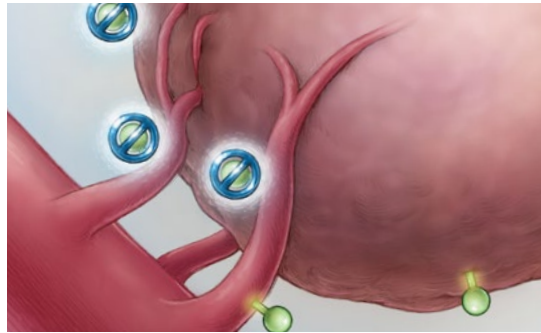


## HOW CABOMETYX<sup>®</sup> (cabozantinib) MAY WORK

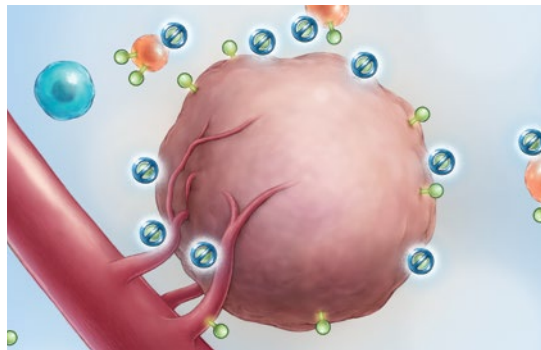
CABOMETYX is believed to reduce or slow the proteins' signals that tell cancer cells to grow and divide.



CABOMETYX may limit the growth of blood vessels that feed the tumor. It also may help the body kill cancer cells.



With CABOMETYX, tumors may stop growing or even shrink.



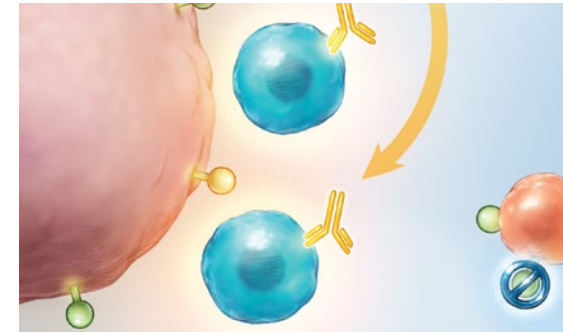
Treatment with CABOMETYX alone or in combination with OPDIVO may impact both cancer and normal cells—which may result in certain side effects. For more information about CABOMETYX side effects, please see Important Safety Information throughout this brochure, on pages 4-7, and the

## HOW CABOMETYX MAY WORK WITH OPDIVO<sup>®</sup> (nivolumab)

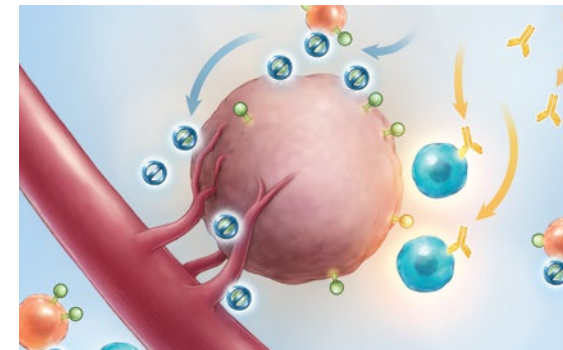
Sometimes CABOMETYX is given with an immunotherapy medicine called OPDIVO.



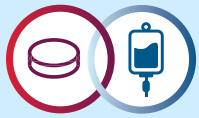
OPDIVO helps immune cells identify and attack cancer cells that are hiding.



CABOMETYX + OPDIVO can improve your body's ability to fight advanced kidney cancer.



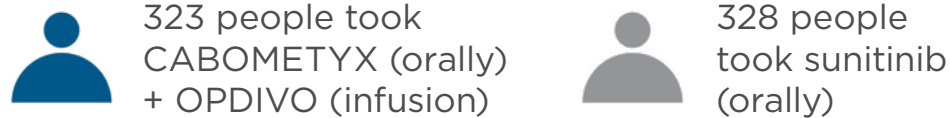
CABOMETYX full Prescribing Information on [CABOMETYX.com](http://CABOMETYX.com). For more information on OPDIVO, including potential side effects, please visit [OPDIVO.com](http://OPDIVO.com).



**CABOMETYX® (cabozantinib) + OPDIVO® (nivolumab)**  
**ADVANCED KIDNEY CANCER:**  
**FIRST TREATMENT**

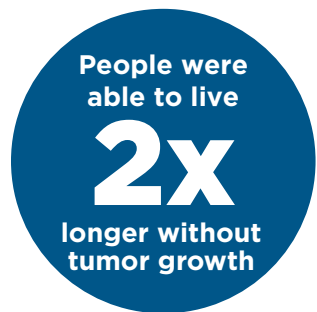
In a clinical study, CABOMETYX was given to people with advanced kidney cancer as a first treatment, with another medicine, OPDIVO. Other people in the study received a different medicine, sunitinib.\*

People stayed on treatment until their tumors started to grow, or they had a side effect that could not be managed. In the study:



Each person's results with CABOMETYX may be different.

**CABOMETYX + OPDIVO results showed that:**



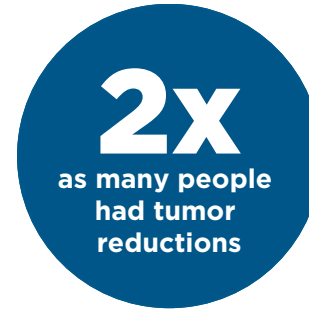
People were able to live **2x LONGER without their tumors growing or spreading**

People who took CABOMETYX + OPDIVO lived without their tumor progressing for a median† of 16.6 months compared with 8.3 months for people who took sunitinib.

\*Sunitinib is a medication used to treat adults with advanced kidney cancer.

†Median is the middle value in a set of measurements—for some it was shorter; for others, longer.

Please see Important Safety Information on pages 4-7 and [tap here for the Patient Information in the full Prescribing Information.](#)



**TWICE AS MANY PEOPLE** had meaningful reductions‡ in their tumor size

**55.7%** of people who took CABOMETYX + OPDIVO had reductions in tumor size compared with **27.1%** of people who took sunitinib.

**NEARLY TWICE AS MANY PEOPLE** saw their tumors disappear completely (complete response)

**CABOMETYX + OPDIVO**  
**8%** complete response  
**48%** partial response

**sunitinib**  
**4.6%** complete response  
**23%** partial response

‡Meaningful reductions defined as the combination of complete response (the disappearance of signs of cancer in response to treatment), and partial response (a decrease in the size of a tumor, or in the extent of cancer in the body, in response to treatment.)

**SELECT IMPORTANT SAFETY INFORMATION**

**What are the possible side effects of CABOMETYX?**


**CABOMETYX may cause serious side effects, including: Bleeding (hemorrhage).** CABOMETYX can cause severe bleeding that may lead to death. Tell your healthcare provider right away if you get any signs of bleeding during treatment with CABOMETYX, including: coughing up blood or blood clots, vomiting blood or if your vomit looks like coffee grounds, red or black (looks like tar) stools, menstrual bleeding that is heavier than normal, or any unusual or heavy bleeding.




**CABOMETYX® (cabozantinib) ALONE  
ADVANCED KIDNEY CANCER:  
FIRST TREATMENT**

**CABOMETYX was proven to help certain people with advanced kidney cancer live longer without their tumor progressing**

CABOMETYX was compared with a medicine called sunitinib\* in a clinical study of people with advanced kidney cancer. All people in the study had one or more established risk factors and had not previously received medicine to treat their cancer. In the study:

 79 people took CABOMETYX

 78 people took sunitinib

People stayed on treatment until their tumor started to grow again or they had a side effect that could not be managed.

Each person's results with CABOMETYX may be different.

\*Sunitinib is a medication used to treat adults with advanced kidney cancer.

Please see Important Safety Information on pages 4-7 and [tap here for the Patient Information in the full Prescribing Information.](#)

**CABOMETYX results showed that:**



People were more likely to **LIVE LONGER without their tumor growing or spreading**

Patients who took CABOMETYX lived without their tumor progressing for a median<sup>†</sup> of 8.6 months compared with 5.3 months for people who took sunitinib.

<sup>†</sup>Median is the middle value in a set of measurements—for some it was shorter; for others, longer.

**SELECT IMPORTANT SAFETY INFORMATION**

**A tear in your stomach or intestinal wall (perforation) or an abnormal connection between 2 parts of your body (fistula).** Tell your healthcare provider right away if you get tenderness or pain in your stomach area (abdomen) that is severe or that does not go away.

**Blood clots, stroke, heart attack, and chest pain.** Get emergency help right away if you get: swelling or pain in your arms or legs, shortness of breath, feel lightheaded or faint, sweating more than usual, numbness or weakness of your face, arm or leg, especially on one side of your body, sudden confusion, trouble speaking or understanding, sudden trouble seeing in one or both eyes, sudden trouble walking, dizziness, loss of balance or coordination, or a sudden severe headache.







**CABOMETYX® (cabozantinib) ALONE  
ADVANCED KIDNEY CANCER: IF YOU  
HAVE BEEN TREATED BEFORE**

**CABOMETYX was proven to help certain people with advanced kidney cancer**

People had taken at least one other medicine to treat their advanced kidney cancer before taking CABOMETYX. In the study:



330 people took CABOMETYX



328 people took a medicine called everolimus\*

People stayed on treatment until their tumors started to grow or they had a side effect that could not be managed.

Each person's results with CABOMETYX may be different.

**CABOMETYX results showed that:**



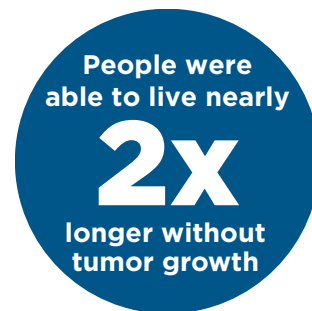
**People were more likely to LIVE LONGER**

People who took CABOMETYX lived a median† of 21.4 months compared with 16.5 months on everolimus.

\*Everolimus is a medication used to treat adults with advanced kidney cancer when certain other medicines have not worked.

†Median is the middle value in a set of measurements—for some it was shorter; for others, longer.

Please see Important Safety Information on pages 4-7 and [tap here for the Patient Information in the full Prescribing Information.](#)



**People were able to live nearly 2x LONGER without their tumor growing or spreading**

People who took CABOMETYX lived without their tumor progressing for a median of 7.4 months compared with 3.8 months for people who took everolimus.



**More than 5x as many people saw their TUMOR SHRINK IN SIZE**

17% of people who took CABOMETYX saw their tumor shrink in size compared with 3% of people who took everolimus. In the clinical study, the tumor had to shrink by at least 30% and had to be confirmed by a second scan.

**SELECT IMPORTANT SAFETY INFORMATION**

**High blood pressure (hypertension).** Hypertension is common with CABOMETYX and sometimes can be severe. Your healthcare provider will check your blood pressure before starting CABOMETYX and during treatment with CABOMETYX. If needed, your healthcare provider may prescribe medicine to treat your high blood pressure. Tell your healthcare provider if you develop severe headaches, nose bleeds, tiredness or confusion, vision changes, chest pain, trouble breathing, irregular heartbeat, or blood in your urine.





**CABOMETYX® (cabozantinib) ALONE**  
**LIVER CANCER: IF YOU HAVE BEEN**  
**TREATED BEFORE WITH SORAFENIB\***

**CABOMETYX was proven to help people live longer**

In a clinical study, people had taken another medicine called sorafenib to treat their liver cancer before taking CABOMETYX.

People stayed on treatment until their tumor started to grow again, or they had a side effect that could not be managed. In the study:



470 people took CABOMETYX



237 people took placebo

Each person's results with CABOMETYX may be different.

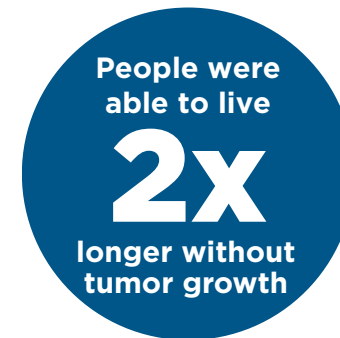
\*Sorafenib is a medication used to treat adults with liver cancer who can not be treated with surgery.

**CABOMETYX results showed that:**



**People were more likely to LIVE LONGER**

People who took CABOMETYX were able to live a median† of 10.2 months, compared with 8.0 months for people who took placebo.



**People were able to live 2x LONGER without their tumor growing or spreading**

People who took CABOMETYX lived without their tumor progressing for a median of 5.2 months compared with 1.9 months for people who took placebo.

†Median is the middle value in a set of measurements—for some it was shorter; for others, longer.

**SELECT IMPORTANT SAFETY INFORMATION**

**Diarrhea.** Diarrhea is common with CABOMETYX and can be severe. If needed, your healthcare provider may prescribe medicine to treat your diarrhea. Tell your healthcare provider right away if you have frequent loose, watery bowel movements.

Please see Important Safety Information on pages 4-7 and [tap here for the Patient Information in the full Prescribing Information.](#)



## TAKING YOUR CABOMETYX® (cabozantinib)

CABOMETYX is a once-daily tablet.  
Take as prescribed by your doctor.

### DO



- Swallow your CABOMETYX tablets whole
- Take your CABOMETYX dose at the same time everyday, or as prescribed
- Take CABOMETYX at least 1 hour before or at least 2 hours after eating

### DO NOT



- Take CABOMETYX with food
- Crush the tablet



- **Drink grapefruit juice, eat grapefruit, or take supplements that contain grapefruit or St. John's wort** during treatment with CABOMETYX

**Call your doctor or nurse right away** if you take too much CABOMETYX.

Please see Important Safety Information on pages 4-7 and [tap here for the Patient Information in the full Prescribing Information.](#)

## What if you forget to take your CABOMETYX?

If your next dose is in:

### LESS THAN 12 HOURS

- Do not try to make up the missed dose
- Take the next dose when you usually take it

### 12 HOURS OR MORE

- Take the missed dose as soon as possible
- Take the next dose when you usually take it

Talk to your doctor or nurse if you miss a dose and have any questions.

To learn more about dosing, please visit [CABOMETYX.com](https://www.CABOMETYX.com).

## TAKING YOUR CABOMETYX® (cabozantinib)

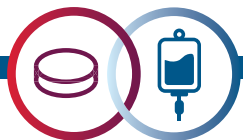
Your doctor and nurse will determine the dose that is right for you

Each person who takes CABOMETYX will respond differently.

These are the usual recommended starting dosages for CABOMETYX



**IF YOU ARE TAKING CABOMETYX ALONE**  
**CABOMETYX 60 mg once daily**



**IF YOU TAKE CABOMETYX IN COMBINATION WITH OPDIVO® (nivolumab)**  
**CABOMETYX 40 mg once daily**  
**OPDIVO 240 mg every 2 weeks** (30-minute intravenous infusion) or  
**480 mg once every 4 weeks** (30-minute intravenous infusion)

Please see Important Safety Information on pages 4-7 and [tap here for the Patient Information in the full Prescribing Information.](#)

## MANAGING SELECT SIDE EFFECTS

Your healthcare team is your best resource

Your doctor, nurse, or member of your healthcare team will help you manage side effects. **How you feel is important to them and they want to offer additional support if you need it.**

No concern is too small to bring to their attention. They are available to help you.



If you have any concerns or are not feeling well, reach out to them right away.

Additional resources to help you during treatment



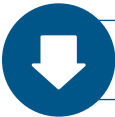
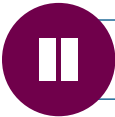

- 1 The Treatment Journal helps you keep track of how you are feeling.
- 2 The Side Effects Tip Cards provide advice to help you manage certain side effects.

You can find these resources in your Patient Care Kit, or at **CABOMETYX.com**.

## MANAGING SELECT SIDE EFFECTS (cont'd)

Your healthcare team has options to manage certain side effects

Your doctor or nurse may:

-  Lower your CABOMETYX® (cabozantinib) dose
-  Temporarily stop your CABOMETYX dose
-  Permanently stop your CABOMETYX dose

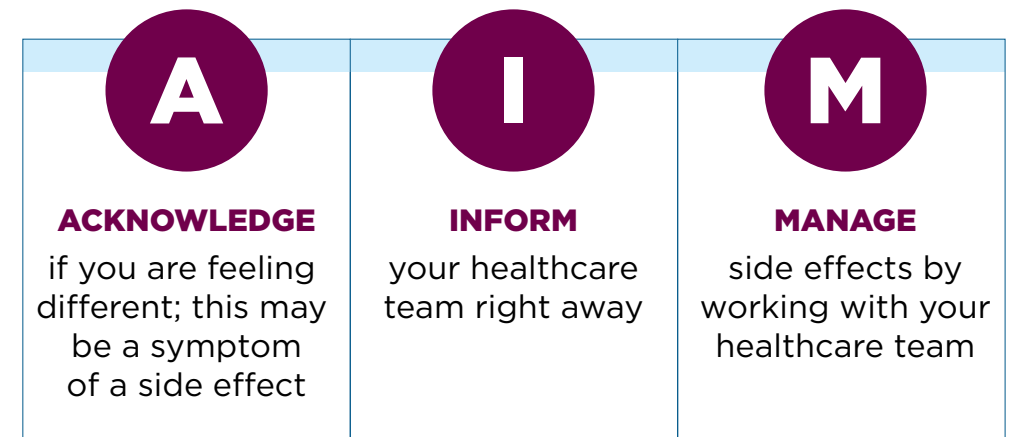
Please note that not all side effects can be managed, and some may lead to permanent discontinuation of the medicine.

---

For more information on side effects of CABOMETYX, visit [CABOMETYX.com](https://www.cabometyx.com).

---

We have an approach called AIM to help you share information with your healthcare team



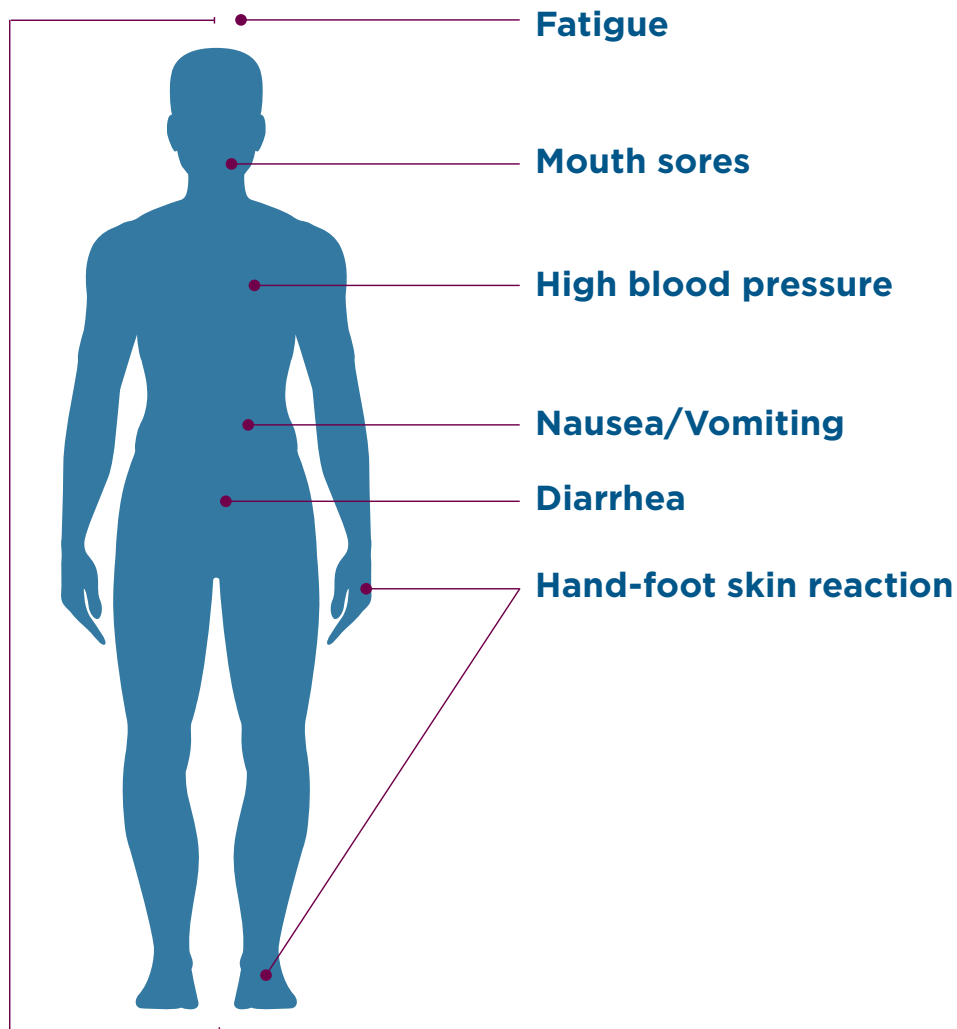
◆ The sooner you share information, the sooner your healthcare team can help you manage certain side effects.

Please see Important Safety Information on pages 4-7 and [tap here for the Patient Information in the full Prescribing Information.](#)

## LEARNING MORE ABOUT SELECT SIDE EFFECTS

### CABOMETYX® (cabozantinib) can cause side effects

Tell your doctor or nurse right away if you have a side effect that bothers you or does not go away. Below are some select side effects that may occur while taking CABOMETYX:



If you are taking CABOMETYX + OPDIVO® (nivolumab), you may also experience side effects from OPDIVO and need to discuss what they are with your doctor or nurse.

The most common side effects of the combination were tiredness, mouth sores, rash, low thyroid hormone levels (hypothyroidism), pain in muscles, bones, and joints, decreased appetite, nausea, changes in the way things taste, stomach-area (abdominal) pain, cough, or upper respiratory tract infection.

If you have questions about **OPDIVO**, please call **1-855-OPDIVO-1 (1-855-673-4861)** or visit **OPDIVO.com**.

**Write down recommendations from your doctor or nurse:**

---

---

---

---

---

---

Please see Important Safety Information on pages 4-7 and [tap here for the Patient Information in the full Prescribing Information](#).

# PARTNERING WITH YOUR HEALTHCARE TEAM

## Prepare for your doctor's appointment

### Before the appointment



If possible, ask your caregiver or friend to come along with you to your visit.

Be prepared with questions you want to ask your healthcare team, such as:

- What are some of the tests that will show if my treatment is working?
- How often will I need to take these tests?
- Who do I contact if I think I am having a side effect?
- Are there exercise restrictions?
- What are the steps I can take to eat healthier?

### During the appointment



#### Take notes

- Ask your caregiver or friend to help by taking notes for you
- Ask questions if there is something you do not understand or are worried about
- If you feel unsure, ask your nurse to write down key information for you
- Do not be afraid to ask questions—your concerns matter



#### Plan ahead

- Schedule your next doctor's appointment before you leave
- Use your phone or the Wallet Card included in this handbook to keep the contact information with you

Please see Important Safety Information on pages 4-7 and [tap here for the Patient Information in the full Prescribing Information.](#)

## TAKING AN ACTIVE ROLE IN YOUR TREATMENT



**Eat well.** Talk to your healthcare team about your nutrition goals

- It is important that your body gets the nutrients and calories it needs



**Keep moving.** Talk to your healthcare team about exercise and what is right for you



**Be mindful.** Meditation may help with anxiety, stress, and fatigue



**Know your blood pressure (BP).**

BP is important to staying healthy; talk to your healthcare team about your BP

Please see Important Safety Information on pages 4-7 and [tap here for the Patient Information in the full Prescribing Information.](#)

### I AM TAKING:



alone

in combination with OPDIVO® (nivolumab)

OPDIVO® and the related logo is a registered trademark of Bristol-Myers Squibb Company.

### Keep your healthcare team's contact information with you

- A printable version of this Wallet Card is available on CABOMETRYX.com
- Use the front side to note if you take CABOMETRYX® (cabozantinib) alone or in combination with OPDIVO® (nivolumab)
- Use the center section to write down your prescription and over-the-counter medications
- Use the back side to write down the names and phone numbers of your doctor and nurse





## SUPPORT AND RESOURCES



To learn more about how EASE can help you, contact us at:

**1-844-900-EASE**  
**(1-844-900-3273)**

Exelixis Access Services (EASE) is your resource for questions and needs related to insurance coverage, financial assistance, and treatment support for CABOMETYX® (cabozantinib).

### HELPING YOU START AND STAY ON CABOMETYX®

Your EASE Case Manager is available by phone to help you:

- Understand if your health insurance covers CABOMETYX tablets and what your out-of-pocket costs for CABOMETYX may be
- Learn about your financial support options

For more information on EASE, visit [CABOMETYX.com](https://www.CABOMETYX.com).

Please see Important Safety Information on pages 4-7 and [tap here for the Patient Information in the full Prescribing Information.](#)

### If you are commercially insured...

#### **EASE Co-pay Program**

Eligible commercially insured patients pay \$0 per month for CABOMETYX. The program covers the remaining out-of-pocket drug costs, up to a \$25,000 yearly limit. Patients with government insurance are excluded. Additional restrictions and eligibility rules apply.

### If you are uninsured, or insured but cannot afford your medicine...

#### **EASE Patient Assistance Program**

May provide you with CABOMETYX free of charge if you qualify. Additional restrictions and eligibility rules apply.

This description of the Exelixis® Access Services program is for informational purposes only. Exelixis makes no representation or guarantee concerning reimbursement or coverage for any service or item. Information provided through the Exelixis Access Services program does not constitute medical or legal advice and is not intended to be a substitute for a consultation with a licensed healthcare provider, legal counsel, or applicable third-party payer(s). Exelixis reserves the right to modify the program at any time without notice.

## Access. Assistance. Along the journey.



**CALL: 1-844-900-EASE**  
**(1-844-900-3273)**



**Monday to Friday**  
**8:00 AM to 8:00 PM (ET)**

If you are taking **CABOMETYX + OPDIVO** and have questions about **OPDIVO** access/support, please call **1-800-861-0048** or visit **OPDIVO.com**



## SUPPORT AND RESOURCES



The BE CONNECTED support program is designed to offer educational information for patients and caregivers.

Sign up to learn more about what to expect while on treatment with CABOMETYX.

- Recognizing side effects, and working with your healthcare team
- Where to find useful resources
- Lifestyle tips offering wellness support
- Information about organizations that may offer support



Please see Important Safety Information on pages 4-7 and [tap here for the Patient Information in the full Prescribing Information.](#)

Sign up for BE CONNECTED today

There are two ways you can sign up:

### 1. ONLINE



Go to [signup.CABOMETYX.com](https://signup.CABOMETYX.com)

OR

### 2. MAIL



Complete and return the **sign-up card** included in your **Patient Care Kit**

If you are taking **CABOMETYX + OPDIVO**, and have questions about **OPDIVO**, please call **1-855-OPDIVO-1 (1-855-673-4861)** or visit **OPDIVO.com**

SIGN UP TODAY



The BE CONNECTED support program is designed to offer educational information for you or someone you care for. There are two ways you can sign up:



Go to **signup.CABOMETRYX.com**

**OR**



Complete and return the sign-up card included in your Patient Care Kit

**Find out more at CABOMETRYX.com**

Please see Important Safety Information on pages 4-7 and **tap here for the Patient Information in the full Prescribing Information.**

OPDIVO® and the related logo is a registered trademark of Bristol-Myers Squibb Company.

**EXELIXIS®**

© 2021 Exelixis, Inc.  
Printed in USA

The logo features a stylized graphic of a red and blue arrow pointing right, followed by the text "CABOMETRYX" in a bold, blue sans-serif font. Below it, "(cabozantinib) tablets" is written in a smaller, blue sans-serif font.

**CABOMETRYX®**  
(cabozantinib) tablets

02/21 CA-1104-3